



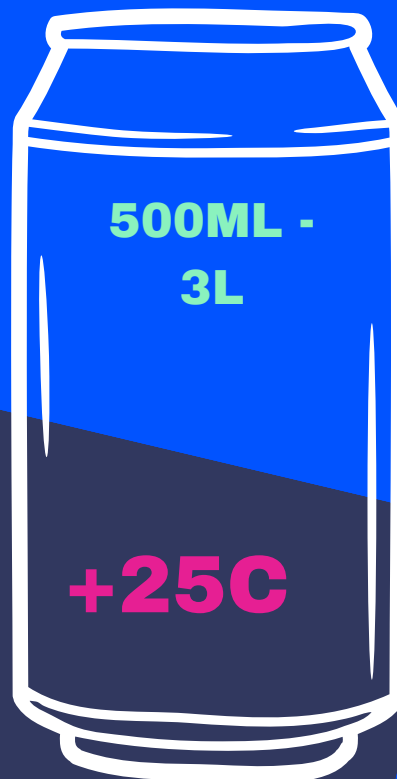
IRELAND'S NEW DEPOSIT RETURN SCHEME



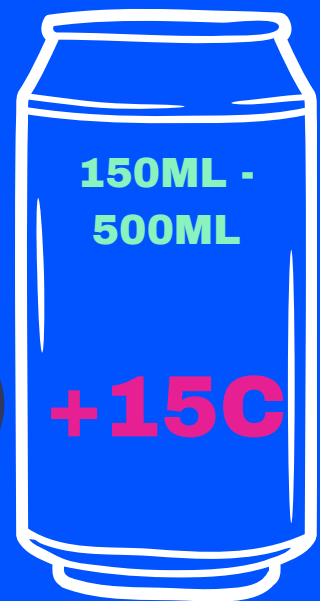
From 1st February 2024, when you buy your beverage PET plastic bottles aluminum and steel cans with the return logo you will pay a small deposit which is fully refunded when you return them empty and undamaged to any shop or supermarket nationwide



**STARTING
1ST FEBRUARY
2024**



**DEPOSIT FEE FOR
DRINK CONTAINERS**



Only drink containers that are part of the deposit scheme will show the Re-turn logo for customers to receive their full refund

The containers must be brought back clean and undamaged

IRELAND'S NEW DEPOSIT RETURN SCHEME



When you buy a drink in a container with the Re-turn logo you will be charged an extra small refundable deposit. You will then be able to claim back the levy by returning the empty container to a participating retailer

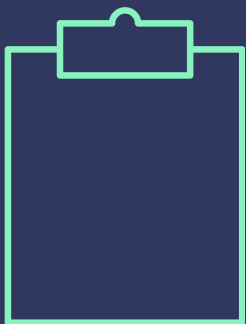
**Containers between 150ml to 500ml will have a
15 cent deposit.**

**Containers over 500ml to 3 liters will have a
25 cent deposit.**



**If your container doesn't have the Re-turn logo on it,
you can't return it and it should be recycled as
normal**

**Certain businesses can apply for a take back exemption,
IE returns will not be accepted. Aramark your catering
provider fits into this category as it is a member of the
hospitality sector.**



**Notices be placed in your
restaurant that will
advise you of your nearest
return retailer to redeem
your deposit.**

**Please visit the return
website for more
information**



FAQS

Can consumers Re-turn drink containers that they brought before 1st February 2024?

No, Drink containers that are produced before 1st February are not included in the deposit Re-turn scheme

what is included in the Deposit Re-turn scheme?

PET Plastic bottles, aluminium and steel cans

How much is the Deposit Re-turn fee?

150ml - 500ml +15c

500ml - Over 3 litres + 25c

How do I get my deposit back ?

Containers must feature the Re-turn logo to receive your deposit back

How do I use a RVM Machine?

In supermarkets and shops each RVM Machine will provide clear instructions on how to return your containers

Is this scheme Government funded?

No, the Deposit Re-turn Scheme is not run by the government, It is funded through producer fees for each product placed on the market



**PLEASE VISIT THE
REURN WEBSITE FOR
MORE INFORMATION**

